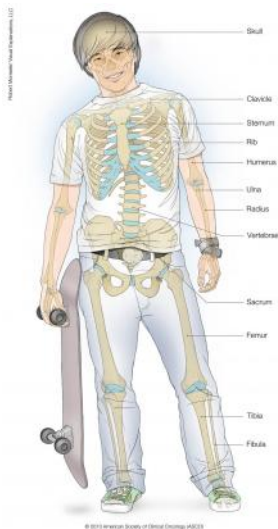


## Ewing Sarcoma - Childhood - Medical Illustrations [1]

This section has been reviewed and approved by the [Cancer.Net Editorial Board](#) [2], 05/2014

ON THIS PAGE: You will find a basic drawing of the major bones in the body. To see other pages, use the menu on the side of your screen.



[Larger Image](#)

*To continue reading this guide, use the menu on the side of your screen to select another section.*

### Links:

[1] <http://www.cancer.net/cancer-types/ewing-sarcoma-childhood/medical-illustrations>

[2] <http://www.cancer.net/about-us>