

[Home](#) > [Types of Cancer](#) > [Islet Cell Tumor](#) > [Islet Cell Tumor - Medical Illustrations](#)

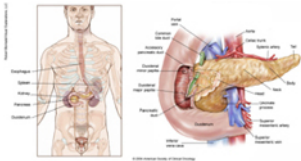
Printed March 5, 2015 from <http://www.cancer.net/cancer-types/islet-cell-tumor/medical-illustrations>

---

## **Islet Cell Tumor - Medical Illustrations** [1]

This section has been reviewed and approved by the [Cancer.Net Editorial Board](#) [2], 05/2014

**ON THIS PAGE:** You will find basic drawings of the pancreas and other nearby organs. To see other pages, use the menu on the side of your screen.



[Larger image](#)

The pancreas is made up of the head, body, and tail. Pancreatic cancer most commonly develops in the head of the pancreas.

*To continue reading this guide, use the menu on the side of your screen to select another section.*

---

### **Links:**

[1] <http://www.cancer.net/cancer-types/islet-cell-tumor/medical-illustrations>

[2] <http://www.cancer.net/about-us>