

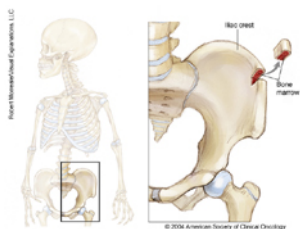
Home > Types of Cancer > [Leukemia - Acute Myeloid - AML - Childhood](#) > Leukemia - Acute Myeloid - AML - Childhood - Medical Illustrations

Printed January 28, 2015 from <http://www.cancer.net/cancer-types/leukemia-acute-myeloid-aml-childhood/medical-illustrations>

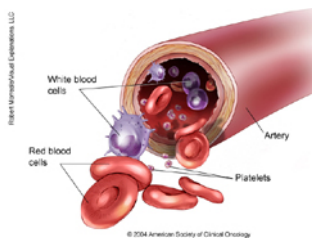
Leukemia - Acute Myeloid - AML - Childhood - Medical Illustrations [1]

This section has been reviewed and approved by the [Cancer.Net Editorial Board](#) [2], 01/2013

ON THIS PAGE: You will find basic drawings of the common body parts affected by this disease. To see other pages, use the menu on the side of your screen.



[Larger image](#)



[Larger image](#)

To continue reading this guide, use the menu on the side of your screen to select another section.

Links:

[1] <http://www.cancer.net/cancer-types/leukemia-acute-myeloid-aml-childhood/medical-illustrations>

[2] <http://www.cancer.net/about-us>