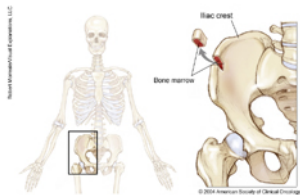


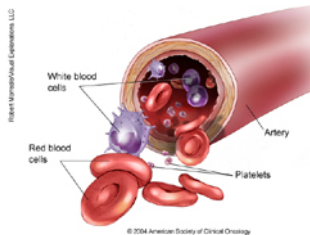
Leukemia - Acute Myeloid - AML - Medical Illustrations [1]

This section has been reviewed and approved by the [Cancer.Net Editorial Board](#) [2], 11/2014

ON THIS PAGE: You will find basic drawings about the common body parts affected by this disease. To see other pages, use the menu on the side of your screen.



[Larger image](#)



[Larger image](#)

Choose [?Next?](#) (below, right) to continue reading this guide to learn what raises a person's risk to develop AML. Or, use the colored boxes located on the right side of your screen to visit any section.

Links:

[1] <http://www.cancer.net/cancer-types/leukemia-acute-myeloid-aml/medical-illustrations>

[2] <http://www.cancer.net/about-us>