

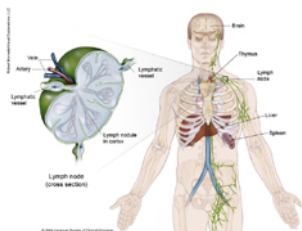
Home > Types of Cancer > Leukemia - Chronic Lymphocytic - CLL > Leukemia - Chronic Lymphocytic - CLL - Medical Illustrations

Printed February 1, 2015 from <http://www.cancer.net/cancer-types/leukemia-chronic-lymphocytic-cll/medical-illustrations>

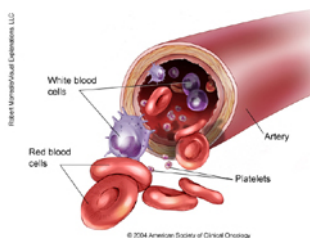
Leukemia - Chronic Lymphocytic - CLL - Medical Illustrations [1]

This section has been reviewed and approved by the **Cancer.Net Editorial Board [2]**, 07/2014

ON THIS PAGE: You will find basic drawings about the common body parts affected by this disease. To see other pages, use the menu on the side of your screen.



Larger image



Larger image

To continue reading this guide, use the menu on the side of your screen to select another section.

Links:

[1] <http://www.cancer.net/cancer-types/leukemia-chronic-lymphocytic-cll/medical-illustrations>

[2] <http://www.cancer.net/about-us>