

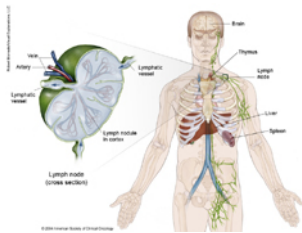
[Home](#) > [Types of Cancer](#) > [Lymphoma - Hodgkin](#) > [Lymphoma - Hodgkin - Medical Illustrations](#)

Printed January 29, 2015 from <http://www.cancer.net/cancer-types/lymphoma-hodgkin/medical-illustrations>

Lymphoma - Hodgkin - Medical Illustrations [1]

This section has been reviewed and approved by the [Cancer.Net Editorial Board](#) [2], 06/2014

ON THIS PAGE: You will find a basic drawing of the common body parts affected by this disease. To see other pages, use the menu on the side of your screen.



[Larger image](#)

To continue reading this guide, use the menu on the side of your screen to select another section.

Links:

[1] <http://www.cancer.net/cancer-types/lymphoma-hodgkin/medical-illustrations>

[2] <http://www.cancer.net/about-us>